



Berrymead Gardens, W3

Offered chain free to the market is this excellent large split level two-bedroom, two-bathroom period conversion that is in great condition throughout and provides just over 860 square feet in a central Acton location.

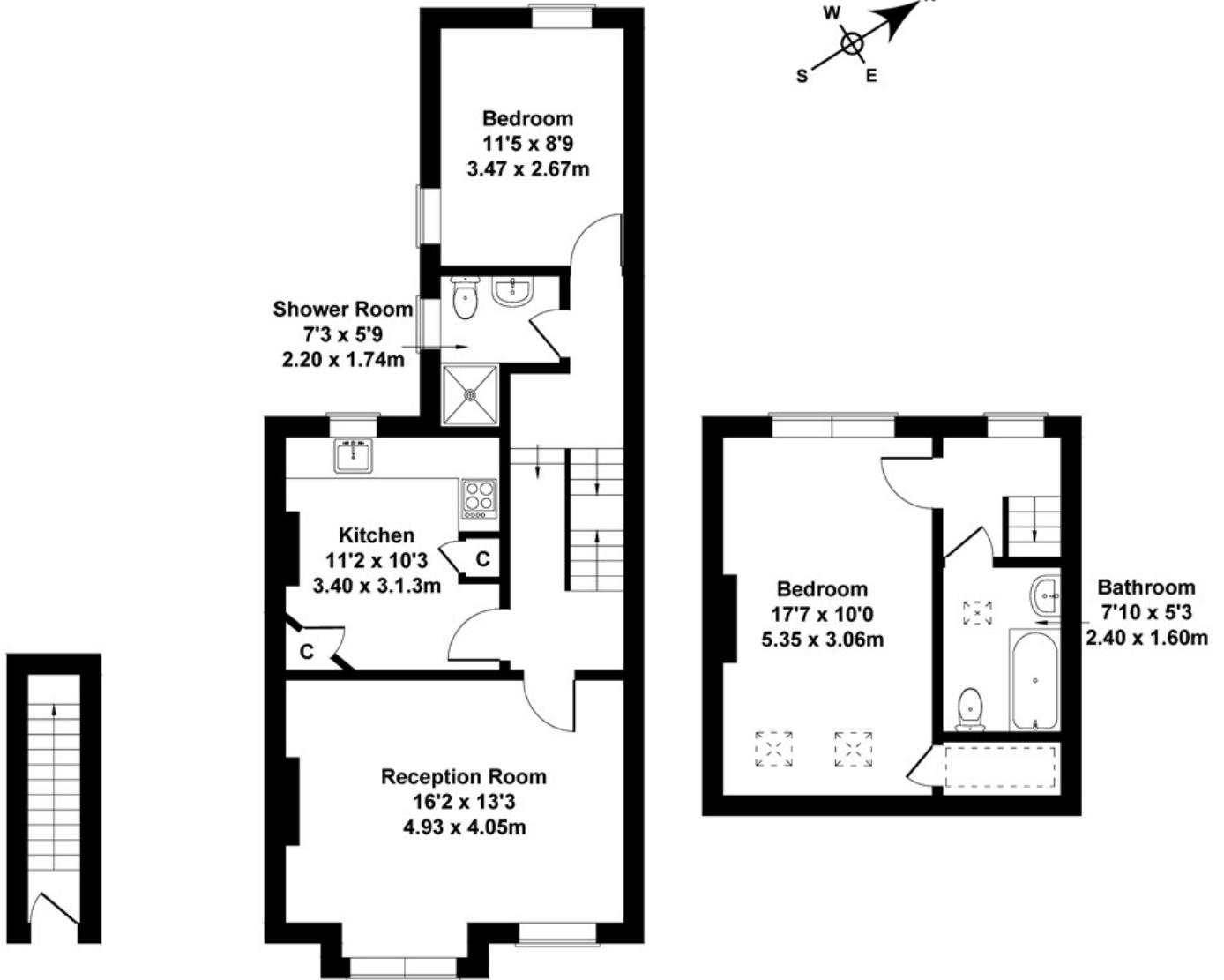
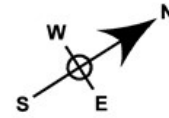
In brief the property consists of two double bedrooms on first and second floors, two bathrooms, large reception (16'2 x 13'3) which allows a lot of natural light and a separate kitchen. The property further benefits from permit parking, a share in the freehold and no onward chain.

£529,950

- Period conversion
- Two double bedrooms
- Split level
- Two bathrooms
- Share of freehold
- No onward chain
- Great condition
- Short walk to multiple transport links
- Low service charges
- Over 850 sq ft internally

FFF - Berrymead Gardens

Approximate Gross Internal Area
861 sq ft - 80 sq m



GROUND FLOOR

FIRST FLOOR

SECOND FLOOR

Not to Scale. Produced by The Plan Portal 2020
For Illustrative Purposes Only.

| Energy Efficiency Rating | | |
|--|----------------------------|-----------|
| | Current | Potential |
| <i>Very energy efficient - lower running costs</i> | | |
| (92 plus) A | | |
| (81-91) B | | |
| (69-80) C | 72 | 76 |
| (55-68) D | | |
| (39-54) E | | |
| (21-38) F | | |
| (1-20) G | | |
| <i>Not energy efficient - higher running costs</i> | | |
| England & Wales | EU Directive 2002/91/EC | |